

## Activating Bridge Baron 20

In order to ensure that Bridge Baron is not being distributed illegally, a copy protection scheme had to be implemented, and unfortunately you must now go through an authorization and activation process. Many people were copying the program, distributing it to their friends, or even selling copies of it that they had made themselves and pirating the game. This is an instance of a few rotten apples spoiling things for everyone else, and we apologize for the inconvenience and appreciate your patience and understanding in activating the program. We have gone to great lengths to make it this process as simple and pain-free as possible.

Please note that in order to follow these instructions you must have a computer that is connected to the Internet. There is a section towards the end of this chapter with information about activating without an Internet connection, but if your computer is not connected to the Internet, or if you need assistance, please give us a call at 1-888-762-8922. Also, if you have problems activating, please be aware that you have 30 days to activate in which you are still able to use the program.

♣**Note:** You do still need to successfully enter a serial number in order to use the program for 30 days. If you are having problems entering your serial number and not even getting to the step of activating the program, you will need to give us a call at 1-888-762-8922 or email us at [support@greatgameproducts.com](mailto:support@greatgameproducts.com).

♣**Note:** International callers please call us at +1-202-558-7913.

After you have successfully installed Bridge Baron and you load it for the first time, you should see a window like the one shown here:

**Bridge Baron Registration**

Welcome to Bridge Baron 20!

Before you get started playing bridge, there are a few simple steps that you must first complete to verify your purchase of Bridge Baron 20.

Your information is required for:

- \* Activation of your serial number
- \* Free technical support
- \* Discounts on multiple installations

Your information is used for internal purposes only and will not be sold to other companies or used to receive unwanted emails.

Required Information:

First Name:  Last Name:

Email Address or Phone Number:

I would like to receive Great Game Products email newsletter ( sent occasionally )

Optional Information:  
(mailing address is used for biannual mailings)

Address:

City:  State/Province:  Zip Code:

Country:

On the inside of the CD case your game came in is a serial number, please enter that serial number below (required):

220 -  -  -  -  -

This is the screen where you will enter your serial number, as well as register your Bridge Baron with us so that we can quickly find your serial number in the future if you happen to lose it or are having other technical problems. Simply fill in your name and email address information in the appropriate fields. Click the check box below your name if you would like to receive our email newsletter, sent out approximately twice a year, with special offers and information about new products. If you do not check this box, you will not receive any email from us. Either way, your information will be kept strictly confidential.

Below that are fields to enter in a mailing address. It is not required that you fill out this information, but it is recommended to ensure the smoothest technical support. As indicated, if you fill out this information you will receive a letter from us twice a year with special offers and updates on the company's products. Again, all information entered here will be held private and never shared with any third parties.

At the bottom of this window, you can see the five fields to enter your serial number. Your serial number can be found on the left-hand side of the CD case in which you received your Bridge Baron. It is boxed off in the lower-left hand corner and should be a lengthy combination of letters and numbers separated by hyphens. It should begin with the characters 220-. Enter the number into the field, checking carefully to make the serial number on the screen look just as it does in your CD case. When you are finished, your screen should look similar to the example shown below:

**Bridge Baron Registration**

Welcome to Bridge Baron 20!

Before you get started playing bridge, there are a few simple steps that you must first complete to verify your purchase of Bridge Baron 20.

Your information is required for:

- \* Activation of your serial number
- \* Free technical support
- \* Discounts on multiple installations

Your information is used for internal purposes only and will not be sold to other companies or used to receive unwanted emails.

Required Information:

First Name:  Last Name:

Email Address or Phone Number:

I would like to receive Great Game Products email newsletter ( sent occasionally )

Optional Information:  
(mailing address is used for biannual mailings)

Address:

City:  State/Province:  Zip Code:

Country:

On the inside of the CD case your game came in is a serial number, please enter that serial number below (required):

220 -  -

When you are finished entering your serial number, click the **OK** button. Assuming that you correctly entered your serial number, you will then be advised to wait as your computer connects to our servers and verifies your serial number. After the program has successfully activated, you will receive this message:



♣**Tip:** If the program does not initially accept your serial number, please try retyping it very carefully.

Now you are all set, and your copy of Bridge Baron should be both registered and activated. We apologize for the inconvenience, but are happy to inform you that you will not have to go through this process, for this version of Bridge Baron, again. You should see the Bridge Baron opening screen with the familiar **Play**, **Compete**, **Learn**, and **Tools** buttons.

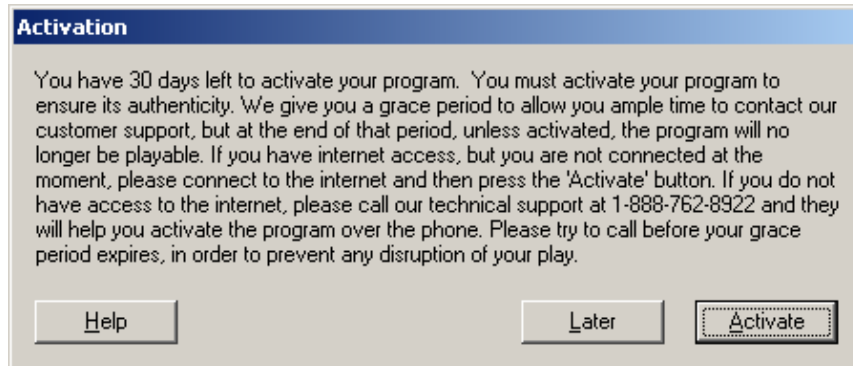
♣**Note:** You may install Bridge Baron on up to three computers, in the same household, with the same serial number. If you try to install Bridge Baron or more than three computers you will be unable to activate the program. To install Bridge Baron on more than three computers, you must purchase an additional copy.

If your computer is not connected to the Internet, there are a few more steps that you will need to go through. When you clicked the **OK** button after entering your serial number, you should have been brought to a screen with this message:



If you have an Internet connection on the computer, such as an AOL® or Juno® account, but are simply not connected at the moment, now is a good time to connect. When you have connected, minimize the window of the Internet connection, and click **Yes** on the window shown above. The program should activate and you should be all set.

If you simply do not have an Internet connection on the computer, you will need to do what is called a **Manual Activation**. To do this, click **No**, and you will be taken to a screen that looks like this:



If you press **Later**, you will be taken straight into the game, and can begin your 30-day grace period where you can play without activating so long as you have entered a valid serial number. Next time you start the program, you will again be presented with this screen. We encourage you to **Activate** as soon as possible, just to get it done and ensure that you will not ever want to play but not be able to.

When you click **Activate**, you will be presented with a page like the one shown on the following page. If you have Internet access on a different computer, or have a friend with Internet access, you can select **Activate using a different computer that has web access** and then follow the onscreen instructions. You will then be given an Installation ID, which will need to be entered by someone with Internet access into the website <http://activate.esellerate.net>. When the Installation ID is entered into that website, you will get an Activation Key back to enter into your program.

♣**Tip: The manual activation process can be relatively complicated and if you do not have an Internet connection, we encourage you to give us a call at 1-888-762-8922.**

