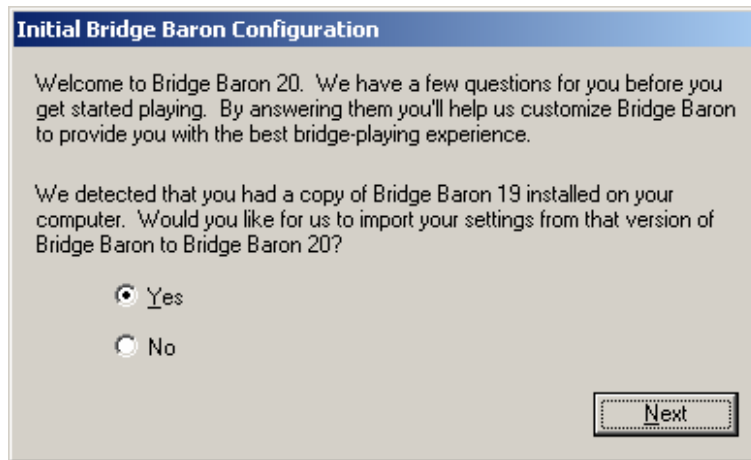


Bridge Baron 20 Startup Wizard

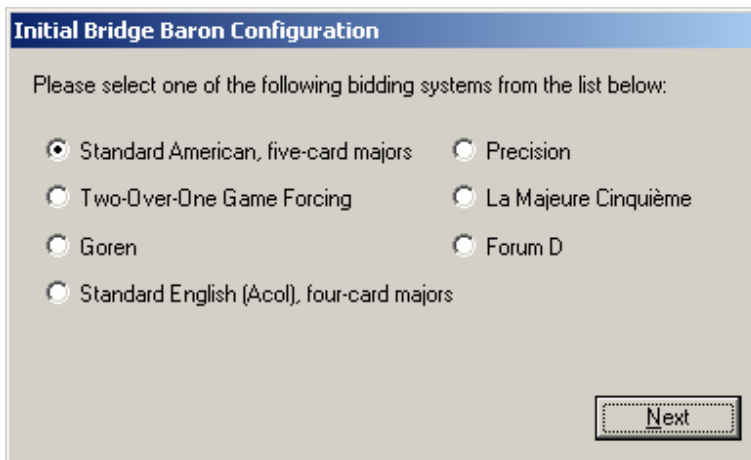
One of the most common questions we receive has always been how to set up your pair profile, the set of agreements that includes the bidding conventions and the lead and signal agreements that your partnership will use. We have made an effort to streamline and simplify this process for Bridge Baron 20 so that you can get set up by just answering a few quick and easy questions the first time you run the game.

When you run Bridge Baron 20 for the first time, after you get your program activated, if you had Bridge Baron 19 already installed on your computer then you will see a screen like this:



If you select **Yes** and click the **Next** button, the program will automatically go back into Bridge Baron 19 and copy over all your settings, including your options and your pair profiles, into Bridge Baron 20. You will then be prompted to also import your tournaments and bridge library files. When you say **Yes** or **No** here, the game will load and give you a chance to check that you are happy with your pair profile settings.

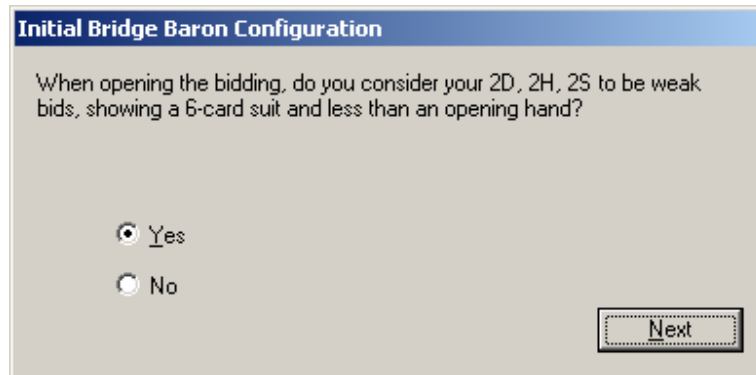
If you said **No** on the screen above, or if you didn't have a copy of Bridge Baron 19 already installed on this computer, you will see a screen like this:



Choose your bidding system from the list. Once you have selected your system, click the **Next** button.

♣**Tip: If you do not know what bidding system you use, and you live in the United States, you probably want to select “Standard American, five-card majors”.**

Depending on which bidding system you have selected, you will then be taken through a series of different screens asking more specific questions about how you bid, such as this one:



Initial Bridge Baron Configuration

When opening the bidding, do you consider your 2D, 2H, 2S to be weak bids, showing a 6-card suit and less than an opening hand?

Yes

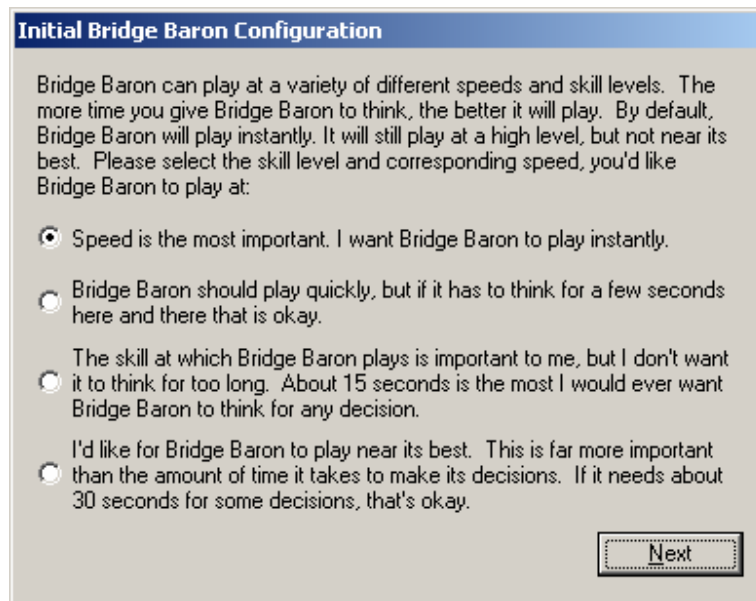
No

Next

Answer each question as accurately as possible, and click the **Next** button.

♣**Tip: If you do not understand a question, Bridge Baron is most likely asking you about something you do not know or play, so most likely you will want to select “No” or “I do not play any of these conventions”.**

At the end of the configuration wizard, you will be shown a screen like this:



Initial Bridge Baron Configuration

Bridge Baron can play at a variety of different speeds and skill levels. The more time you give Bridge Baron to think, the better it will play. By default, Bridge Baron will play instantly. It will still play at a high level, but not near its best. Please select the skill level and corresponding speed, you'd like Bridge Baron to play at:

Speed is the most important. I want Bridge Baron to play instantly.

Bridge Baron should play quickly, but if it has to think for a few seconds here and there that is okay.

The skill at which Bridge Baron plays is important to me, but I don't want it to think for too long. About 15 seconds is the most I would ever want Bridge Baron to think for any decision.

I'd like for Bridge Baron to play near its best. This is far more important than the amount of time it takes to make its decisions. If it needs about 30 seconds for some decisions, that's okay.

Next

This is where you set the amount of time you want Bridge Baron to think before making its bid or play. As you would expect, the longer you give the program to think before making its decisions, the better those decisions will be. Bridge Baron will play well even on the fastest speed, but to get it to play closer to its best it will sometimes require as much as 20 or 30 seconds to make a decision. Some people are willing to sacrifice a little quality to have it play instantly; others prefer it to play as well as it is able to. You can make your choice, and then click **Next**.

Now you are finished configuring your pair profile and are ready to play! This was a one-time process, and hopefully you ended up with a pair profile that you will be happy with. The game should have loaded, possibly with the pair profile screen shown here:

If this screen is visible, you can review the settings shown to make sure they are to your liking and that you understand everything listed. If it is not quite what you wanted, you can further customize your pair profile by clicking the **Edit** button near the top left of the window. When you are satisfied with your pair profile settings, click the **OK** button and start playing bridge.